



***meta*-TOPOLIN**
CAS Number: 75737-38-1

CERTIFICATE OF ANALYSIS

Molecular Weight: 241.25

White crystals.

M.P. 306.0-307.0 °C

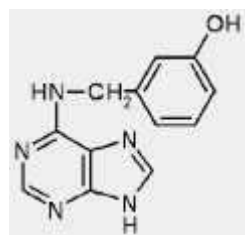
UV: water, λ_{\max} 269.1 nm

HPLC purity, 268 nm, 99+%.

MASS SPECTROMETRY: Passes the ESI(+) test; matches $[M]^+ = 242.1$ amu.

^1H NMR (DMSO): in accordance

Synonym: mT, 6-(3-hydroxybenzylamino)purine



BioApex s.r.o.
Technology Park of Palacký University
Šlechtitelů 21
783 71 Olomouc - Holice
Czech Republic
Phone: +420 585 631 420
Cell phone: +420 737 815 152
E-mail: bioapex@atlas.cz